

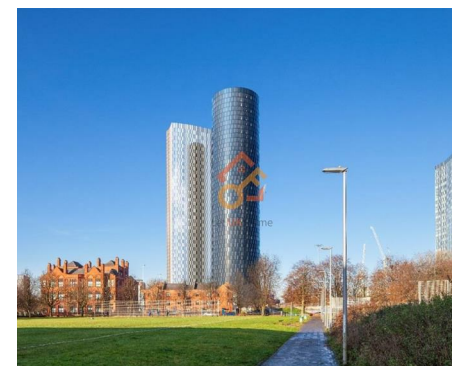
Let **UK** Home

0 Bedrooms

Parking Space

Located
in Manchester

£180 Per Month



pmadmin@letukhome.co.uk

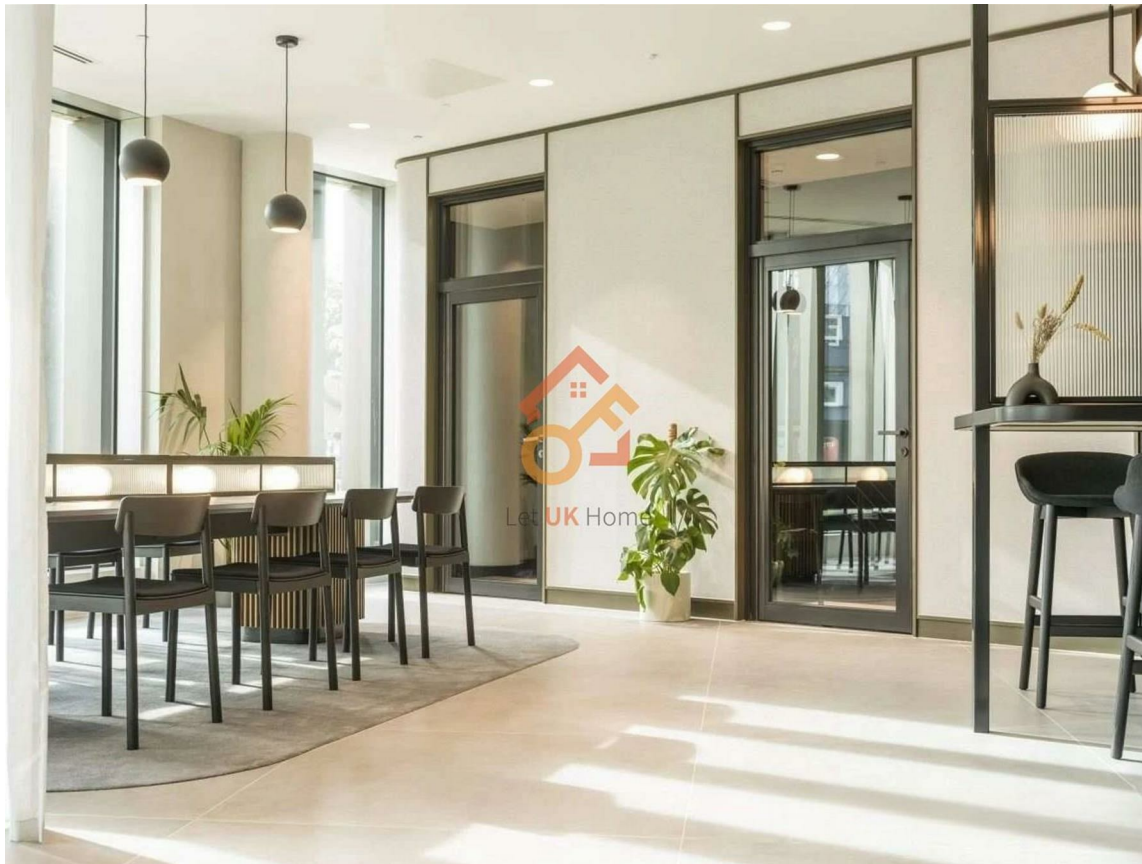
<https://www.letukhome.co.uk/>

01615219812



11 Silvercroft Street Manchester

M15 4ZQ



Prime Location: Situated in the New Jacksons Skyscraper district, in the heart of Manchester city centre.

Secure: Well-lit, secure parking area with gated entry, CCTV, etc.

Exclusive Access: Reserved exclusively for residents—no need to worry about finding a spot.

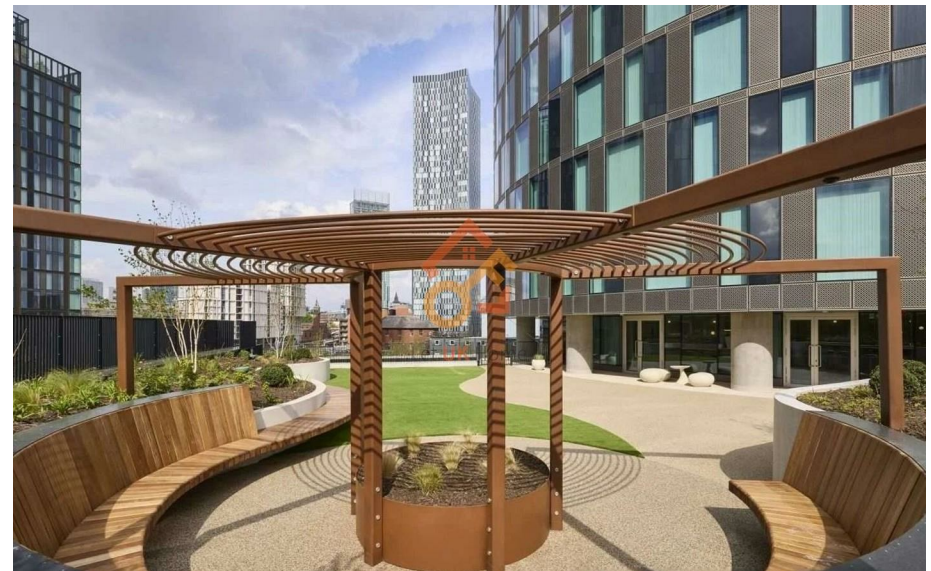
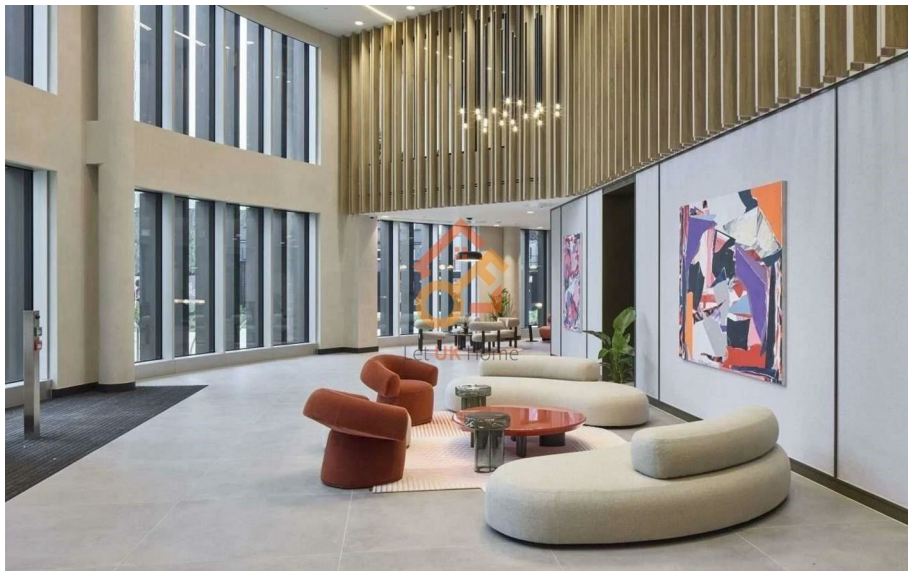
Convenient: Easy access to elevators and main entrances.

No more circling the block or dealing with street parking! Secure your dedicated parking space and enjoy the peace of mind of having your vehicle right where you live.

11 Silvercroft Street Manchester

£180 Per Month

- Secure Underground Parking
- Manchester
- New Jacksons Skyscraper District
- Three60
- Prime Location





Let **UK** Home

1/F, St James Tower 7 Charlotte
Street
Manchester
M1 4DZ

01615219812

pmadmin@letukhome.co.uk

Council Tax Band:

Local Authority:

Agents Note: Whilst every care has been taken to prepare these particulars, they are for guidance purposes only. All measurements are approximate and are for general guidance purposes only and whilst every care has been taken to ensure their accuracy, they should not be relied upon and potential buyers/tenants are advised to recheck the measurements.

Energy Efficiency Rating		
	Current	Potential
Very energy efficient - lower running costs		
(92 plus) A		
(81-91) B		
(69-80) C		
(55-68) D		
(39-54) E		
(21-38) F		
(1-20) G		
Not energy efficient - higher running costs		
England & Wales		EU Directive 2002/91/EC

<https://www.letukhome.co.uk/>